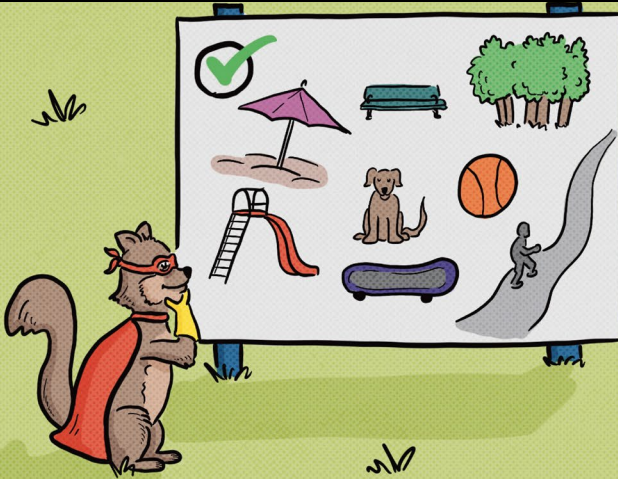


# READY, SET, CLEAN!

YOUR GUIDE TO HOSTING A  
COMMUNITY PARK CLEAN-UP

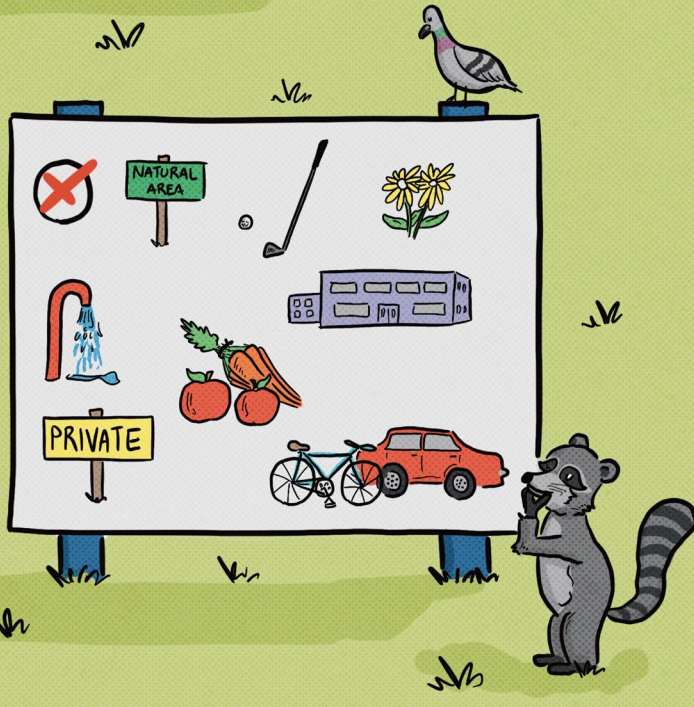


Every great adventure starts in the right place. Clean-ups can only happen in parks and public spaces the City has approved – these need extra help because litter has been identified there.



# IS YOUR PARK READY

# FOR ACTION?



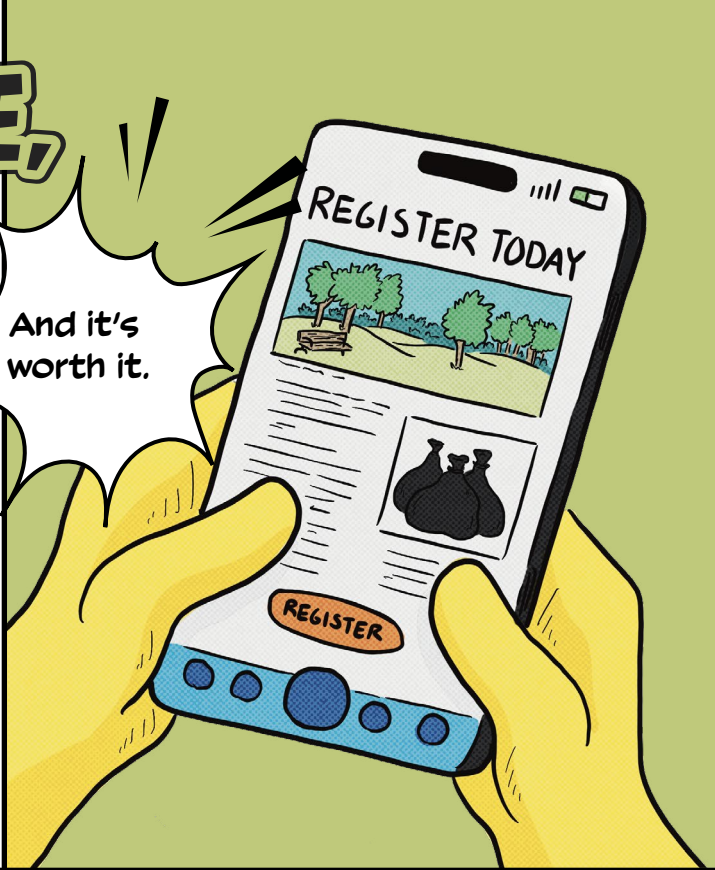
The City will pick up the bags of garbage you collect. [Check out Clean Toronto Together on www.toronto.ca](http://www.toronto.ca) to find the map and your mission location!

# FIRST MOVE, REGISTER!

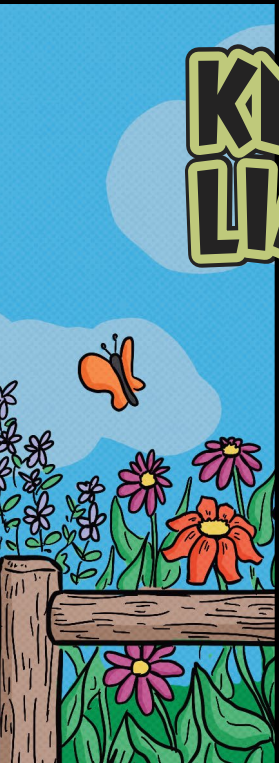
Before anything else,  
you need to register –

Registration means our parks don't get overwhelmed by too many groups at the same time, your waste gets picked up on time, you can access supplies, and your hard work gets counted. Register a few weeks ahead and you will be ready for action.

And it's  
worth it.



# KNOW YOUR LIMITS, HERO

A vertical illustration on the left side of the page showing a garden scene. There are several colorful flowers (pink, orange, and purple) in the foreground, a wooden fence, and a butterfly flying in the blue sky above.

Your superpower today is picking up litter — and that's a big one. But even heroes have rules. Don't pull plants, dig, prune, or move anything natural like logs or branches. Leave the leaves, twigs and plants on the ground.

Stay away from flower gardens, meadows, wetlands, and areas marked for nature recovery. Steer clear of slippery or unstable ground like river banks and stormwater ponds.

Not sure about a spot? Leave it alone. Knowing when to step back is part of the job.

Spring is one of the most sensitive times of the year. Animals are having their young, our mighty pollinator insects are awakening, and plants are starting to grow. True heroes give them the space they need to be safe and well.

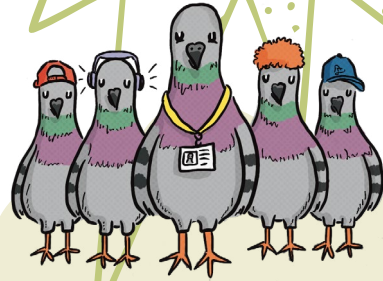


# CHOOSE YOUR MISSION



## COMMUNITY GROUP

Register and go.  
Your park needs you!



## SCHOOL GROUP

Suit up with adult  
supervision and a safety  
talk for all students.



## CORPORATE GROUP

Same steps as  
everyone else –  
welcome to the team.

# SPREAD THE WORD



Tell everyone!  
Share on  
social media, in  
newsletters, at  
school, or with  
posters.



Add your event to Park People's community calendar and get more neighbours involved.

**One rule: Please don't use the City of Toronto logo — this helps make sure that everyone knows this is a community-led event.**

*Try this:*

"Community-led park clean-up, registered with the City of Toronto and Park People!"

# GEAR UP!

EVERY HERO NEEDS  
THE RIGHT KIT.

Wear closed-toe shoes,  
bring gloves, pack  
sunscreen, dress for the  
weather, and don't forget  
your water bottle, long  
pants, and long sleeves.



Bring a first aid kit (students should be accompanied by a person trained in first aid). Stay on paths, keep out of ravines, and don't climb anything. If you spot a needle: don't touch it, call 311, and write it in your report. Safety first, always.

# COLLECT YOUR SUPPLIES

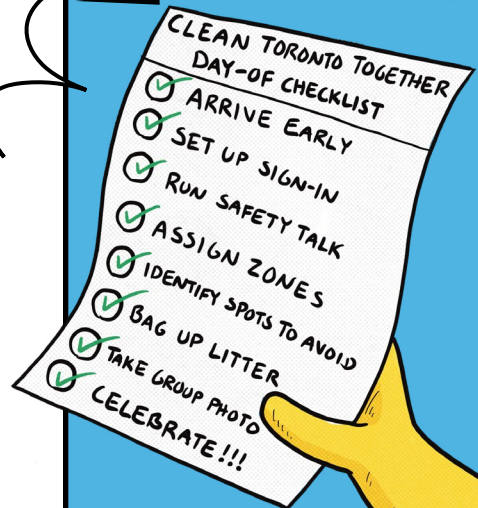
Your gear is waiting at a pick-up location near you. You'll get garbage bags and gloves. After the clean-up, leave filled bags at your chosen drop-off spot or where the City suggests, so we can collect!



# DAY-OF CHECKLIST

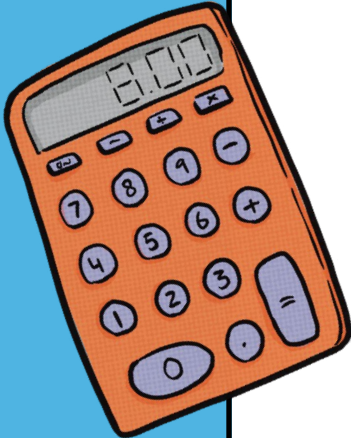
Time to make it happen!

- |  |   |
|--|---|
| <input type="checkbox"/> Arrive early            | <input type="checkbox"/> Point out spots to avoid |
| <input type="checkbox"/> Set up                  | <input type="checkbox"/> Bag up litter            |
| <input type="checkbox"/> Sign-in                 | <input type="checkbox"/> Take a group photo       |
| <input type="checkbox"/> Run a quick safety talk | <input type="checkbox"/> Celebrate your crew!     |
| <input type="checkbox"/> Assign zones            |   |



# MEASURE YOUR IMPACT

You did something real today – now show us the numbers!



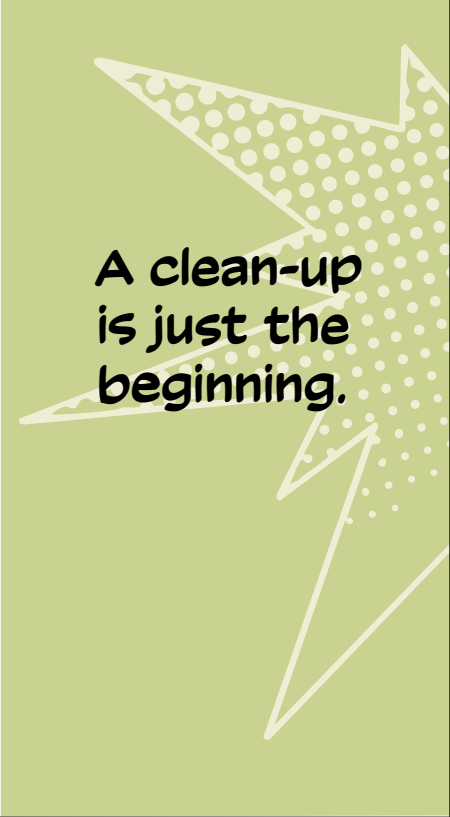
The City will send you a short report with: park name, date, number of volunteers, bags filled, area covered, photos, and anything unusual you found.

Your numbers help show the world what community action looks like.




# LEVEL UP: WHAT COMES NEXT





**A clean-up  
is just the  
beginning.**



**Community and pollinator gardens, pumpkin parades, movie nights, natural ice rinks, bake ovens... Parks come alive when neighbours come together!**

Come back in other seasons and explore ways to get involved and build community, look after a specific area of the park, team up with a local school or business, or join a guided park care event. The more your crew shows up, the more the park changes — and the stronger your neighbourhood gets. The park needs you all year long.

**Clean-ups are also a great moment to talk about the environment.**

**Why does litter end up here?**

**What happens to it?**

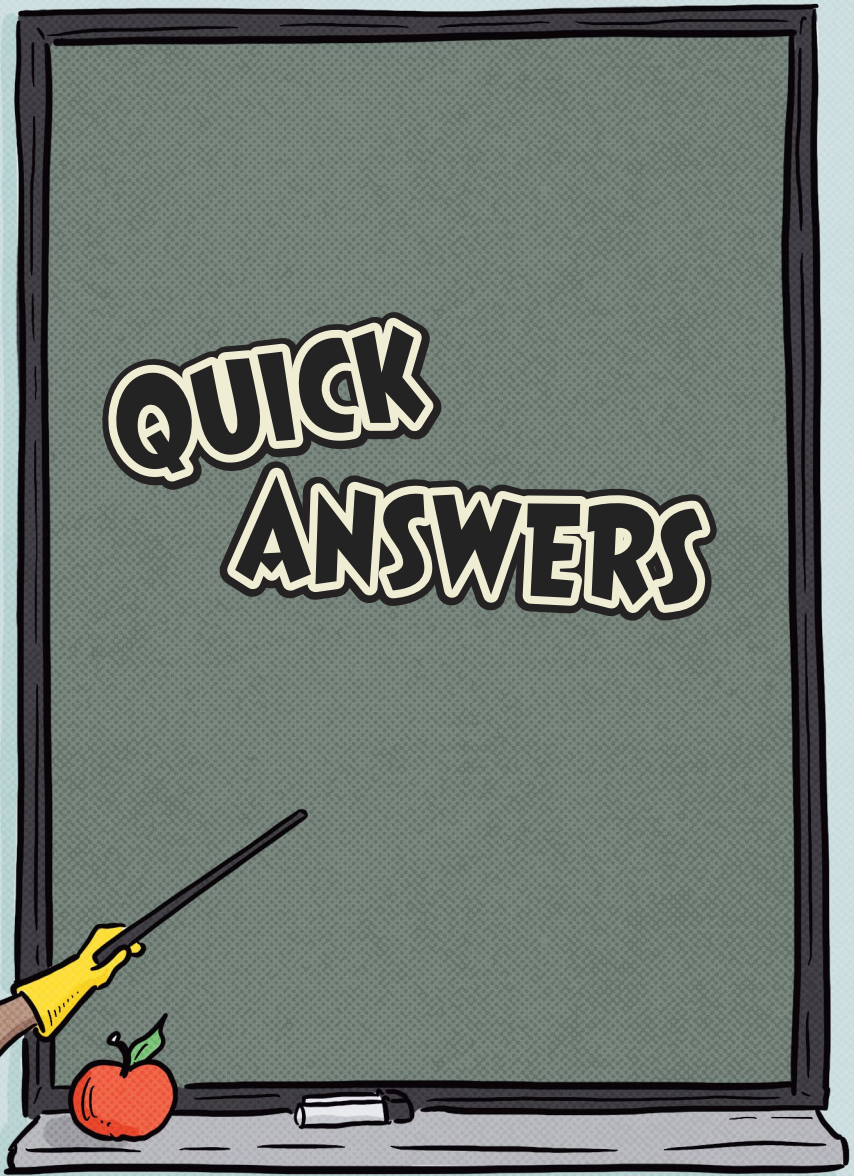
You can invite a local environmental group to set up a table, bring in a speaker, or run a simple activity — like making seed balls with kids — that turns a clean-up into a learning experience. Taking care of our parks is part of taking care of the world.

## **Nurturing new park heroes:**

A clean-up is a chance to build real connections with the people who live near the park — and to hear what they love about it and what they'd like to see change. Set up a sign-in sheet and invite people to join your park group's newsletter. Ask what brings them to the park. Listen.



# QUICK ANSWERS



**Do we need to register?**

Yes — it's what makes the whole mission work.

**Can we pull out invasive plants?**

No — without an expert, you can accidentally make things worse by spreading the seeds.

**Can we plant or prune?**

Not this time — clean-up day is for litter only.

**Can we tidy the pollinator gardens?**

Leave them alone — they're already doing important work.

**What if we find a needle?**

Don't touch it. Call 311. Write it in your report.

**Can we remove graffiti?**

No — report it through 311.

**Can we use the park bins?**

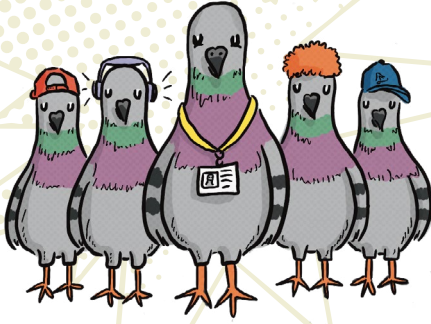
For small amounts only. Securely tie your bags and leave them beside designated bins, away from roads and paths, for City pickup.

**What if it rains?**

Light rain: heroes don't melt, keep going.  
Thunder or heavy rain: reschedule and update your registration.

**What if we find a large item or hazardous waste like lightbulbs or propane tanks?**

Leave it and report through 311.



**[www.toronto.ca](http://www.toronto.ca)**

[cleantoronto@toronto.ca](mailto:cleantoronto@toronto.ca)

-  [CityofTO](#)    [CityofTO](#)    [City-of-Toronto](#)    [CityofToronto](#)
-  [LiveGreenTO](#)    [LiveGreenTO](#)

**[www.parkpeople.ca](http://www.parkpeople.ca)**

[torontonetworks@parkpeople.ca](mailto:torontonetworks@parkpeople.ca)

-  [ParkPPL](#)    [ParkPeopleCA](#)    [Park-People-Toronto](#)

